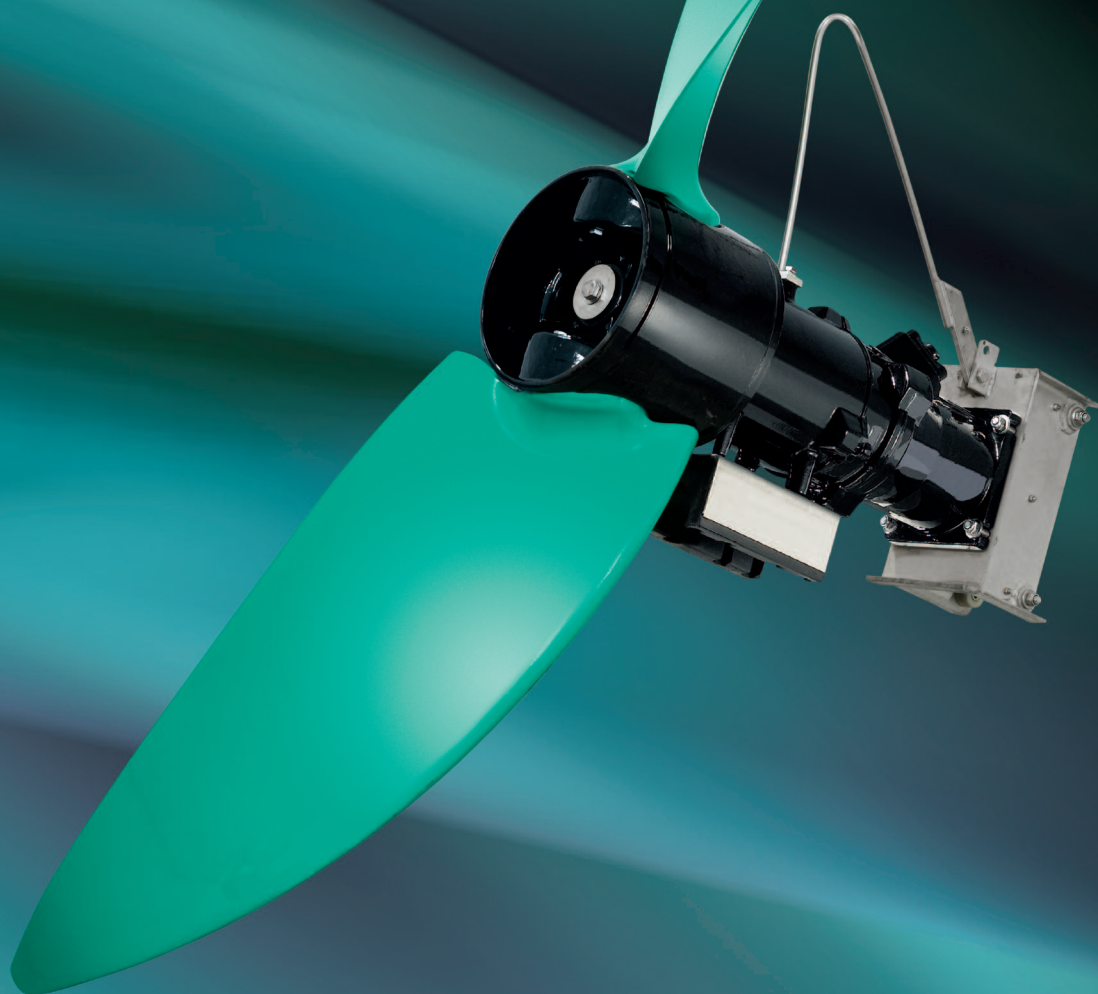


Let deliver.
Avoid standstill.
Save energy costs.



Rental mixers from Wilo.

No matter if accidents, unexpected defects or longer repair phases: With Wilo rental mixers things keep on turning! Quick, flexible and cost-saving!

WILO
Pumpen Intelligenz.

Continuous process reliability by WILO rental mixers.

Quick, flexible and cost-saving.

The optimal solution.

No matter if accidents, unexpected defects or longer repair phases: With Wilo rental mixers things keep on turning!

Wilo rental mixers 400 V/50 Hz

From a component system our specialists select a rental mixer according to the requirements of your station or according to the thrust and power data of the existing mixers in order to support you optimally in case of an emergency! Within 48 h ex works you will have an almost equivalent replacement mixer. As soon as your original mixer will be ready for use again or other possible damages which have caused the breakdown, will have been repaired, you can send back the rental mixer to WILO EMU Hof. For all questions about the rental mixers our sales representative will always be at your disposal!

Mixer series	Propeller diameter	Voltage	Rated power	Rated current	Rent/day	Lump sum*
Type	mm	V	kW	A	€	€
TR 14 - 21	140 - 220	400	0,5 - 1,3	1,4 - 3,3	11	42
TR 22 - 40	220 - 400	400	1,75 - 4,5	4,5 - 9,4	18	75
TR 50-2 - TR 90-2	500 - 900	400	3,5 - 10,0	7,9 - 21,0	42	160
TR 215	1500	400	4,5	9,4	58	230
TR 226	2600	400	1,75 - 3,5	4,45 - 7,9	58	230
TR 326	2600	400	1,75 - 3,5	4,45 - 7,9	68	230

* for overhaul (cleaning, electrical and mechanical control)

In case of improper use of the rental mixer and its accessories or in case of damages the incurring repair costs will completely be invoiced.

Wilo rental variants

Standard rent

This variant is recommended for short term or long term need. The minimum rental period is 7 calendar days. All submersible mixers are equipped with 10 m cable.

In case of repair

If a mixer is sent back to WILO EMU GmbH Hof for repair, you will get 50 % discount on the standard rent (except lump sum for overhaul).

Allowance for provision

If you are not sure whether you need a mixer within the next days, there is the possibility of making a reservation. So you can be sure that this mixer will be at your disposal. Because we cannot use the unit for other purposes during this time, we will charge you 25 % of the standard rent for the provision time.

Wilo rent terms

Rent

The basis for billing is the rental price per calendar day. The day of delivery or collection from Wilo is the first day of rent. The day of delivery to the factory of WILO EMU GmbH is the end of rent.

Transport

If you want, we organise the appropriate outgoing and return transport.

Basis of contract

The operating state of your plant is of top priority to Wilo. We charge fair prices for our services. The rent terms for Wilo submersible mixers apply.

- Visit of the sales representative is requested
- A detailed quotation for a new replacement mixer is requested
- A detailed quotation for a rental mixer is requested

Competence Team Mixer
WILO EMU GmbH
Heimgartenstraße 1-3
95030 Hof/Saale
Germany
T +49 9281 974-540
F +49 9281 974-345
ctmixer@wilo.com
www.wilo.de

Company/Name

Street/postcode/town

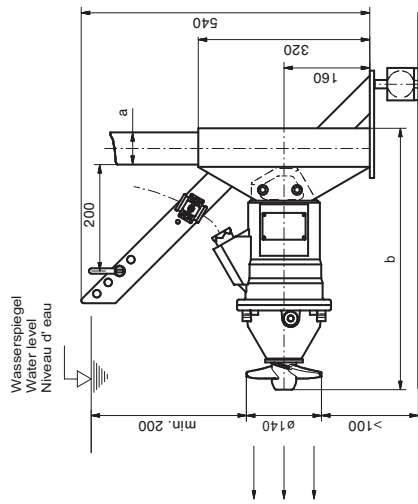
Phone/Fax

Abmessungen für Tauchmotorrührwerk MINIPROP TR 14

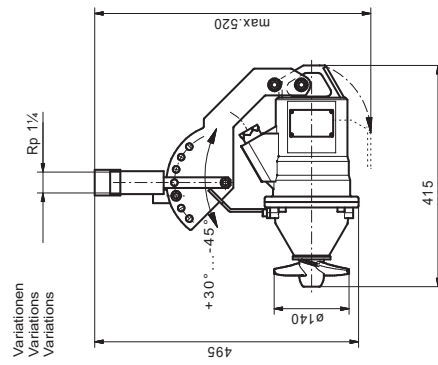
Dimensions of Submersible mixer **MINIPROP TR 14**
Dimensions du circulateur immergé **MINIPROP TR 14**



Heimgartenstraße 1-3 D-95030 Hof/Saale
Telefon +49 9281 974-0 Fax +49 9281 96528
www.wiloemu.com E-Mail: info@wiloemu.de



Motor / Motor type/ Type de moteur	T12K-4/6
Gestänge-Gr./ Size of pipes / Dimension du tube b	a = 60x60 490 480
Gewicht / Weight / Poids	23.5 kg 23 kg



Aufhängung
Suspension
Système de relèvement

Adapter 1 1/4"
Adapter 1 1/4"
Élément d'adaptation 1 1/4"

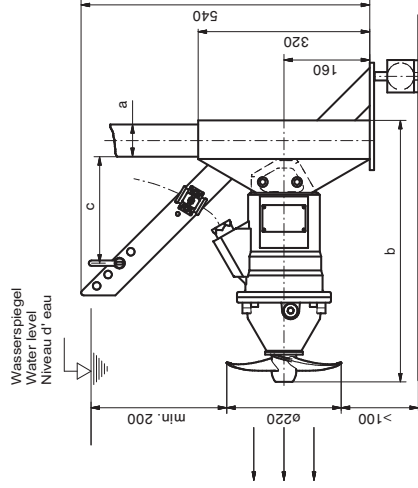
Maßstab: 1:10 Technische Änderungen vorbehalten - Technical changes reserved - Modifications techniques réservées

Abmessungen für Tauchmotorrührwerk MINIPROP TR 21

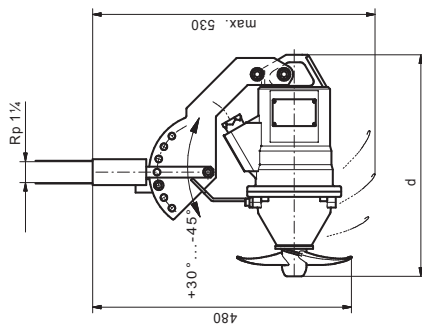
Dimensions of Submersible mixer **MINIPROP TR 21**
Dimensions du circulateur immergé **MINIPROP TR 21**



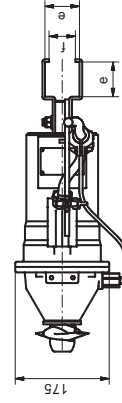
Heimgartenstraße 1-3 D-95030 Hof/Saale
Telefon +49 9281 974-0 Fax +49 9281 96528
www.wiloemu.com E-Mail: info@wiloemu.de



Variationen
Variations
Variations



Aufhängung
Suspension
Système de relèvement



Motor / Motor type/ Type de moteur	T12K-4/6	T12K-4/11
Gestänge-Gr./ Size of pipes / Dimension du tube b	a = 60x60 490 200	a = 60x60 480 200
Gewicht / Weight / Poids	23.5 kg 23 kg	29.5 kg 29 kg
	a = 50x50 415	a = 50x50 470
	64 40 32	64 40 32
	54 32	54 32
	23.5 kg 23 kg	29.5 kg 29 kg

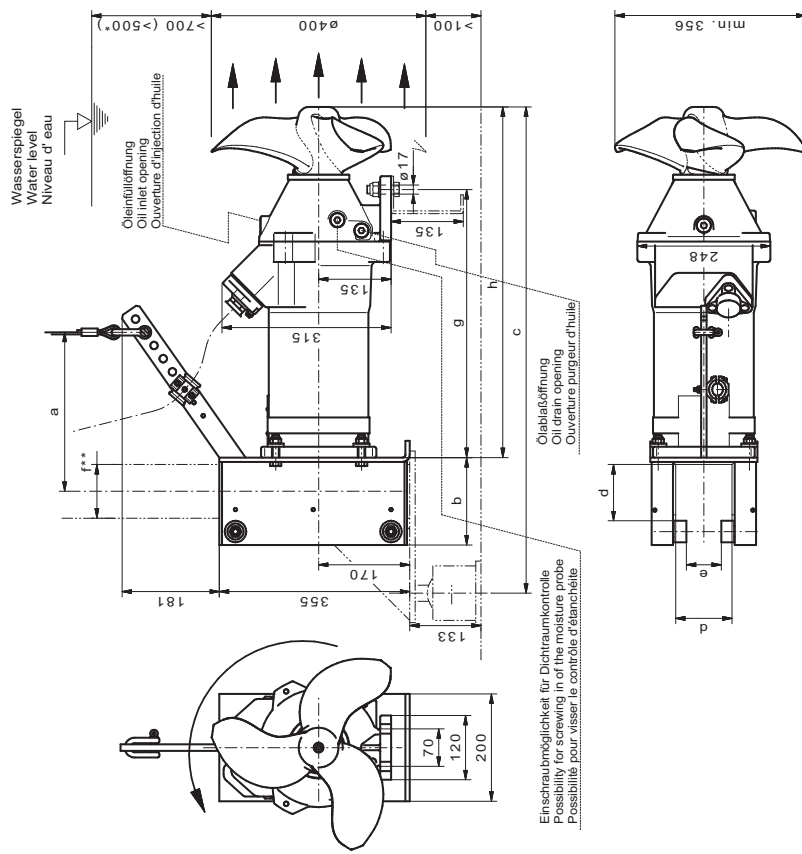
Maßstab: 1:10 Technische Änderungen vorbehalten - Technical changes reserved - Modifications techniques réservées

Abmessungen für Tauchmotorrührwerk UNIPROP TR 40

Dimensions of Submersible mixer **UNIPROP TR 40**
Dimensions du circulateur immergé **UNIPROP TR 40**



Heimgartenstraße 1-3 D-95030 Hof/Saale
Telefon +49 9281 974-0 Fax +49 9281 96528
www.wiloemmu.com E-Mail: info@wiloemmu.de



Motor / Motor type / Type de moteur	T17-8/16R	T17-8/24R	..6/24R
Gestänge-Gr. / Size of pipes / Dimension du tube	f = 80x80	f = 100x100	f = 100x100
a	265	275	300
b	143	163	163
c	807	827	907
d	85	105	105
e	45	65	65
g	420	65	500
h	574	654	654
Gewicht / Weight / Poids	max. 84 kg	max. 84 kg	max. 93 kg

Stütze: nicht im Lieferumfang
Support: not in range of delivery
Support: ne pas gamme de livraison

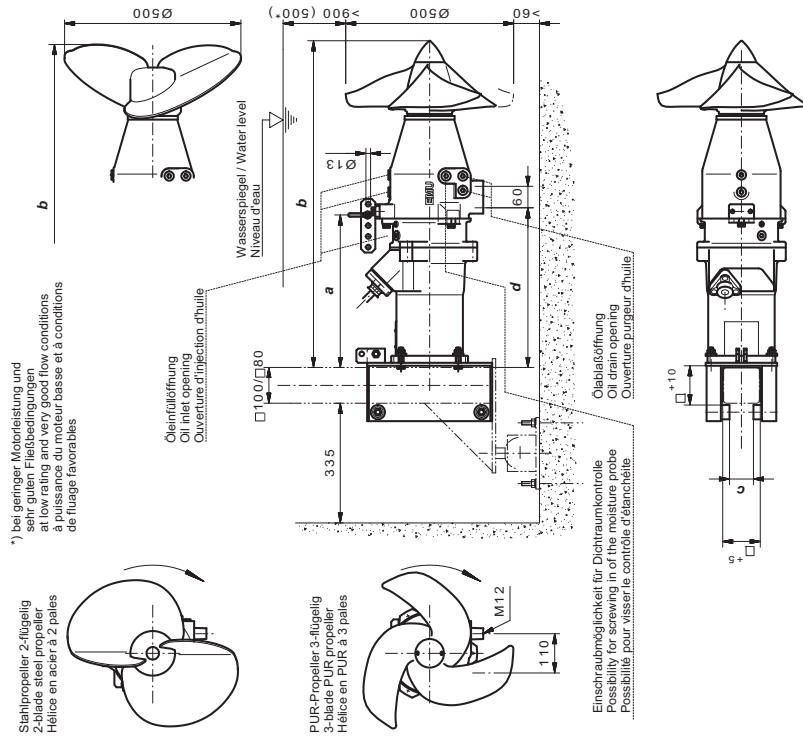
Maßstab: 1:10 Technische Änderungen vorbehalten - Technical changes reserved - Modifications techniques réservées

Abmessungen für Tauchmotorrührwerk UNIPROP TR 50-2

Dimensions of Submersible mixer **UNIPROP TR 50-2**
Dimensions du circulateur immergé **UNIPROP TR 50-2**



Heimgartenstraße 1-3 D-95030 Hof/Saale
Telefon +49 9281 974-0 Fax +49 9281 96528
www.wiloemmu.com E-Mail: info@wiloemmu.de



250kg-Hilfsbevorrichtung für alle Typen vorsehen!
Include auxiliary lifting device 250kg for all types!
A prévoir le dispositif auxiliaire de levage 250kg pour tous les types!

Motor / Motor type / Type de moteur	.../8	.../12	.../16	.../22+24
Führungsrohr / Guide pipe / Tube de guidage	80x80	100x100	100x100	100x100
b	842	877	877	915
c	45	65	45	65
d	374	409	409	447
Motor / Motor type / Type de moteur	3-fl. PUR	2-fl. Stahl	3-fl. PUR	2-fl. Stahl
Propeller / Propeller / Hélice	a	325	360	340
Gewicht / Weight / Poids	102 kg	110 kg	118 kg	121 kg
				129 kg
				138 kg

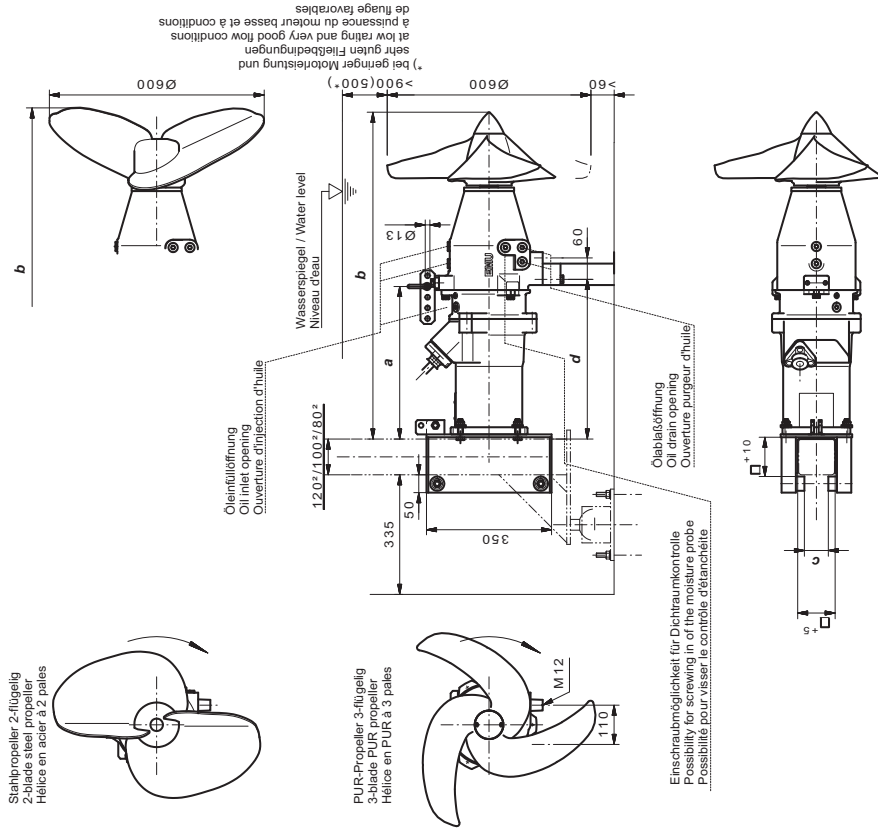
Maßstab: 1:15 Technische Änderungen vorbehalten - Technical changes reserved - Modifications techniques réservées

Abmessungen für Tauchmotorrührwerk UNIPROP TR 60-2

Dimensions of Submersible mixer **UNIPROP TR 60-2**
Dimensions du circulateur immergé **UNIPROP TR 60-2**



Heimgartenstraße 1-3 D-95030 Hof/Saale
Telefon +49 9281 974-0 Fax +49 9281 96528
www.wiloemu.com E-Mail: info@wiloemu.de



Stahlpropeller 2-flügelig
2-blade steel propeller
Hélice en acier à 2 pales

PUR-Propeller 3-flügelig
3-blade PUR propeller
Hélice en PUR à 3 pales

*) bei geringer Fließbedingung und
sehr guten Fließbedingungen
à low rating and very good flow conditions
de flügel favorables

250kg-Hilfsbevorrichtung für alle Typen vorgesehen!
Include auxiliary lifting device 250kg for all types!
A prévoir le dispositif auxiliaire de levage 250kg pour tous les types!

Motor / Motor type / Type de moteur	80x80	100x100	80x80	100x100	80x80	100x100	100x100	100x100	120x120
Führungrohr / Guide pipe / Tube de guidage	a	b	c	d	a	b	c	d	a
...	45	65	45	65	45	65	65	65	85
...	374	374	409	409	447	477	557	557	557
Motor / Motor type / Type de moteur	3-fl. PUR	2-fl. Stahl	3-fl. PUR	2-fl. Stahl	3-fl. PUR	2-fl. Stahl	3-fl. PUR	2-fl. Stahl	3-fl. Stahl
Propeller / Propeller / Hélice	295	325	330	360	340	340	360	360	360
a	860	877	915	950	995	1030	1030	1030	1030
Gewicht / Weight / Poids	103 kg	112 kg	111 kg	120 kg	131 kg	130 kg	139 kg	139 kg	139 kg

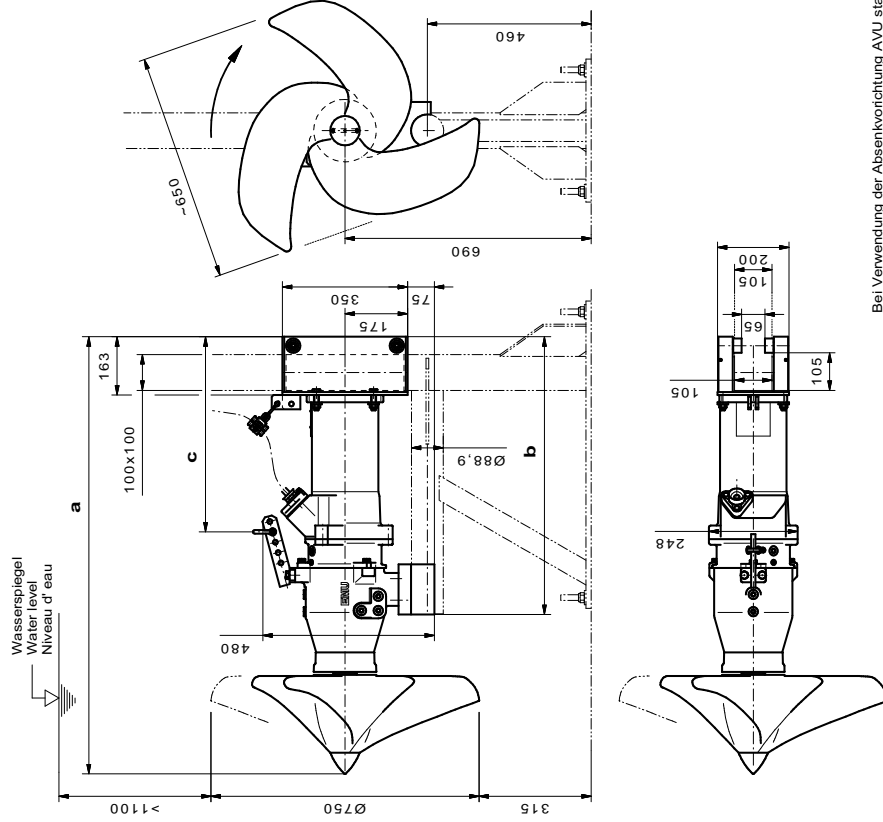
Maßstab: 1:15 Technische Änderungen vorbehalten - Technical changes reserved - Modifications techniques réservées

Abmessungen für Tauchmotorrührwerk UNIPROP TR 75-2

Dimensions of Submersible mixer **UNIPROP TR 75-2**
Dimensions du circulateur immergé **UNIPROP TR 75-2**



Heimgartenstraße 1-3 D-95030 Hof/Saale
Telefon +49 9281 974-0 Fax +49 9281 96528
www.wiloemu.com E-Mail: info@wiloemu.de



Wasserspiegel
Water level
Niveau d'eau

Bei Verwendung der Absenkvorrichtung AVU statt
AVUS/AVUSH bitte beim Hersteller rückfragen!

When the lowering device AVU is used instead of
the AVUS/AVUSH please contact the manufacturer!

En cas d'utilisation du dispositif de descente AVU
au lieu de l'AVUS/AVUSH veuillez vous adresser au
fabricant!

Motor	T17- /24R	T17- /16R
a	1230	1150
b	780	700
c	545	525
Gewicht	135 kg	127 kg

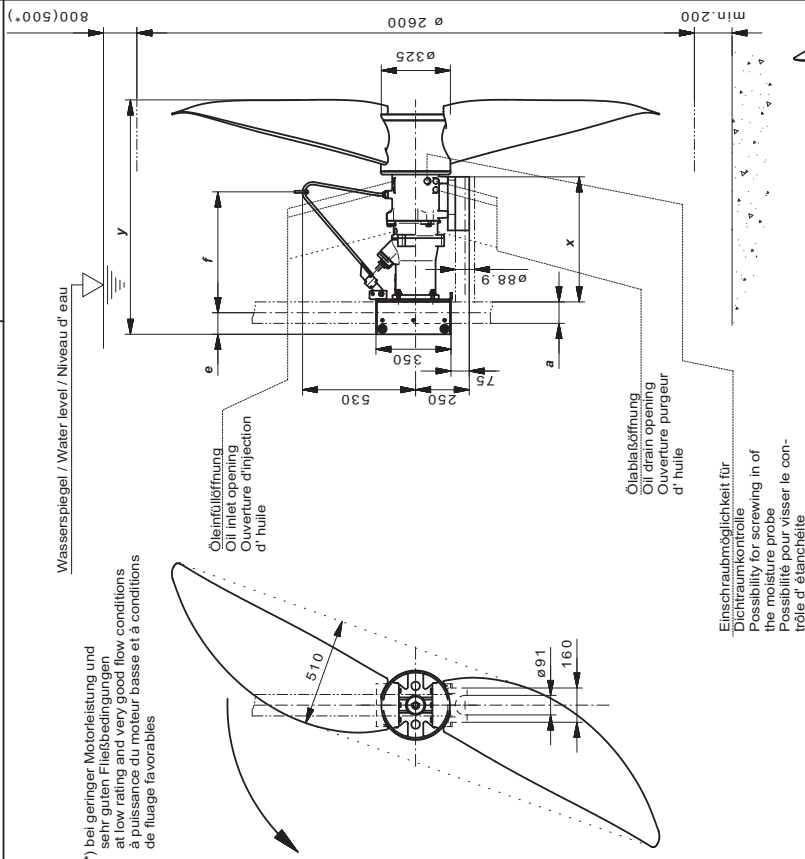
Maßstab: 1:15 Technische Änderungen vorbehalten - Technical changes reserved - Modifications techniques réservées

Abmessungen für Tauchmotorrührwerk MAXIPROP TR226

Dimensions of Submersible mixer
Dimensions du circulateur immergé



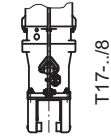
Heimgartenstraße 1-3 D-95030 Hof/Saale
Telefon +49 9281 974-0 Fax +49 9281 96528
www.wiloem.de E-Mail: info@wiloem.de



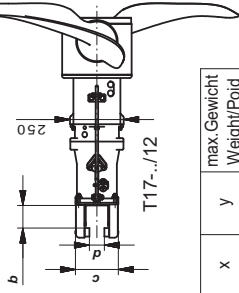
*) bei geringer Motorleistung und sehr guten Fließbedingungen at low rating and very good flow conditions à puissance du moteur basse et à conditions de fluage favorables

Ölablaßöffnung
Oil drain opening
Ouverture purgeur
d'huile

Einschraubmöglichkeit für Dichtraumkontrolle
Possibility for screwing in of the moisture probe
Possibilité pour visser le contrôle d'étanchéité



T17-../8



T17-../12

Motor/Motor type Type de moteur	a	b	c	d	e	f	x	y	max Gewicht Weight/Poid
T17-../8R	100x100	105x105	200	70	101	565	550	1060	177 kg
T17-../8V	120x120	124x124	270	54	111	575	600	1080	177 kg
T17-../12R	100x100	105x105	200	70	101	600	585	1095	187 kg
T17-../12V	120x120	124x124	270	54	111	610	625	1115	187 kg

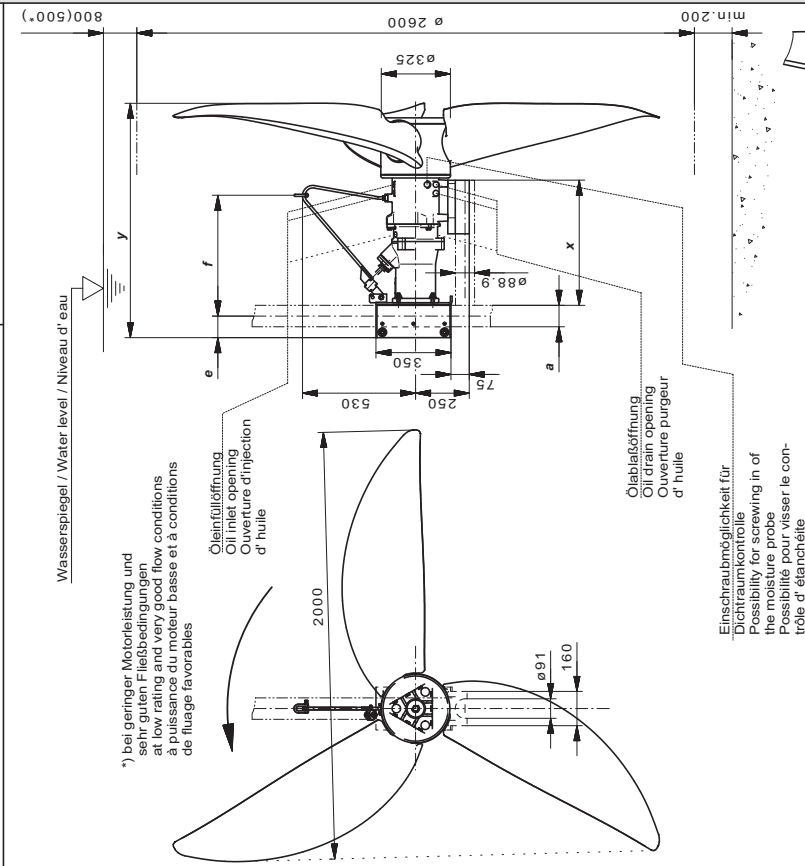
Maßstab: 1:25 Technische Änderungen vorbehalten - Technical changes reserved - Modifications techniques réservées

Abmessungen für Tauchmotorrührwerk MEGAPROP TR326

Dimensions of Submersible mixer
Dimensions du circulateur immergé



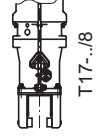
Heimgartenstraße 1-3 D-95030 Hof/Saale
Telefon +49 9281 974-0 Fax +49 9281 96528
www.wiloem.de E-Mail: info@wiloem.de



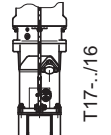
*) bei geringer Motorleistung und sehr guten Fließbedingungen at low rating and very good flow conditions à puissance du moteur basse et à conditions de fluage favorables

Ölablaßöffnung
Oil drain opening
Ouverture purgeur
d'huile

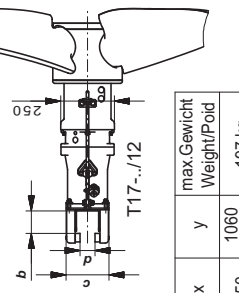
Einschraubmöglichkeit für Dichtraumkontrolle
Possibility for screwing in of the moisture probe
Possibilité pour visser le contrôle d'étanchéité



T17-../8



T17-../16



T17-../12

Motor/Motor type Type de moteur	a	b	c	d	e	f	x	y	max Gewicht Weight/Poid
T17-../8R	100x100	105x105	200	70	101	565	550	1060	197 kg
T17-../8V	120x120	124x124	270	54	111	575	600	1080	197 kg
T17-../12R	100x100	105x105	200	70	101	600	585	1095	207 kg
T17-../12V	120x120	124x124	270	54	111	610	625	1115	207 kg
T17-../16R	100x100	105x105	200	70	101	640	625	1135	218 kg
T17-../16V	120x120	124x124	270	54	111	650	625	1155	218 kg

Maßstab: 1:25 Technische Änderungen vorbehalten - Technical changes reserved - Modifications techniques réservées